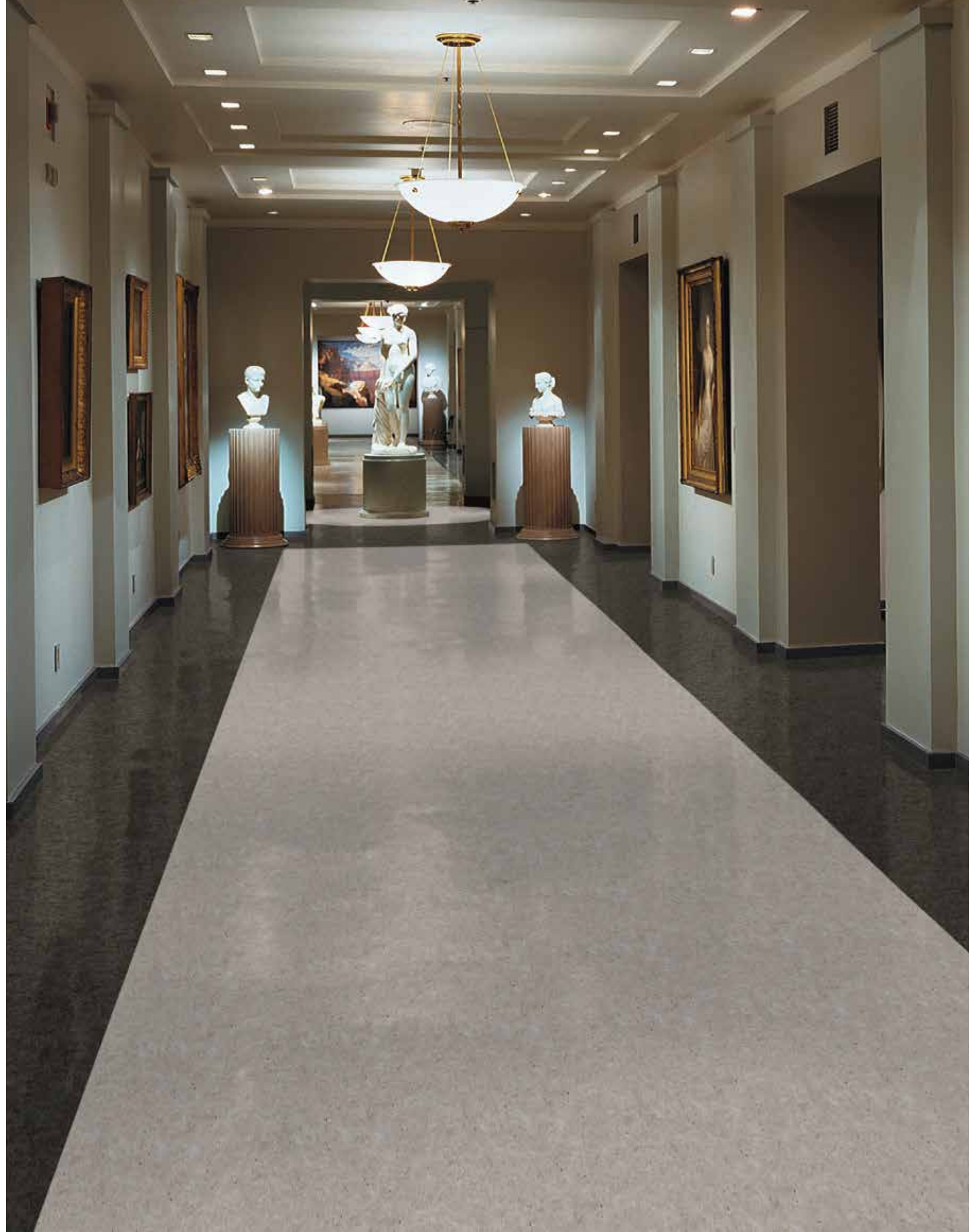




ArmstrongFlooring™

Varit®







K6194-01A

Sandro



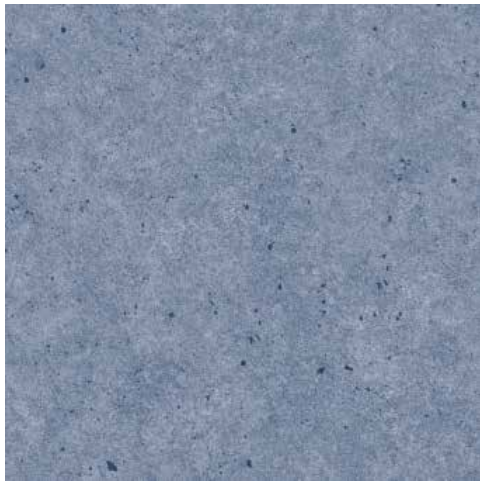
K6194-02A

Livid



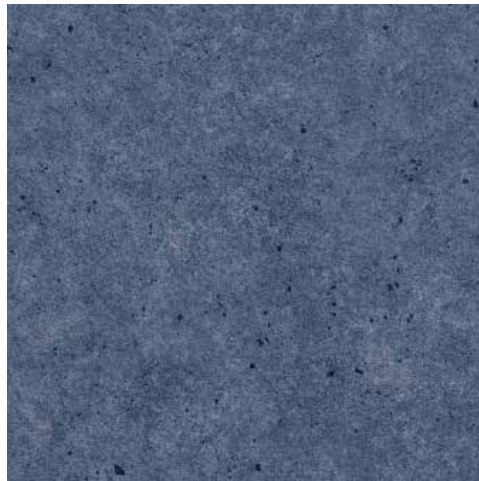
K6194-03A

Nebula



K6192-09A

Sklit



K6192-10A

Blues



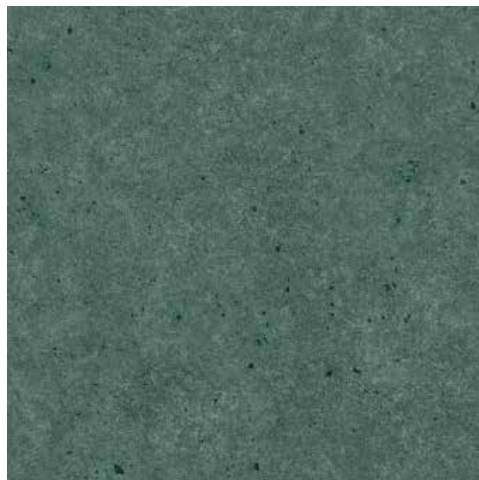
K6192-11A

Andaman



K6192-14A

Brook



K6192-13A

Viridis



K6192-12A

Sage



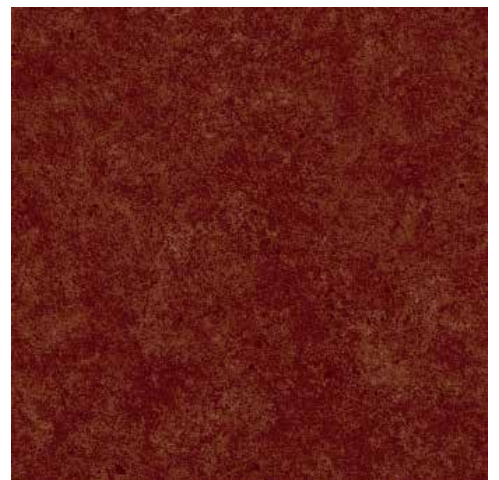
K6192-17A

Sakuranin



K6192-15A

Gloom



K6192-16A

Twilight



K6192-01A

Creamy



K6192-05A

Snowing



K6192-03A

Crystal



K6192-06A

Foggy



K6192-04A

Sunnz



K6192-07A

Dunes



K6192-02A





Rue



K6192-08A

Stardust

TECHNICAL DATA

Characteristics	Standard	Unit	Result
Type of flooring	EN ISO 10582		Solid Heterogeneous Vinyl Sheet
Surface treatment			TRUESHIELD for HET
Pattern			Concrete
Safety criteria			
Flammability	EN 13501-1	class	Bfl-s1
Slip resistance	DIN 51130	class	R9
Dynamic coefficient of friction	EN 13893	class	DS
Performance behaviour			
Roll dimensions	EN ISO 24341	m	2.0m×15/20m
Overall thickness	EN ISO 24346	mm	2.0
Thickness of wear layer	EN ISO 24340	mm	0.3
Residual indentation	EN ISO 24343-1	mm	< 0.10
Dimensional stability	EN ISO 23999	%	< 0.4
Wear resistance	EN 649	class	T
Color fastness	EN ISO 105-B01	rating	≥ 6
Castor Wheel Test	EN ISO 4918		
Chemical resistance	EN 423		No stain 0
Classification			
Commercial very heavy	EN ISO 10582	class	Class 31
Additional property			
Castor chair  ✓		Antistatic behaviour  ✓	
Underfloor heating  ✓		Chemical resistance  ✓	