

# SIGNATURE COLLECTION

---



## **SPC Flooring**

*"You are different, stand on different.  
Coz not everyone gets a chance to  
stand on the best."*

***Wooden Finish***



**Moonlight Oak**



**Classic Oak**



**Coastal Gray**



**Golden Oak**



**Coffee Touch**



**Vintage**

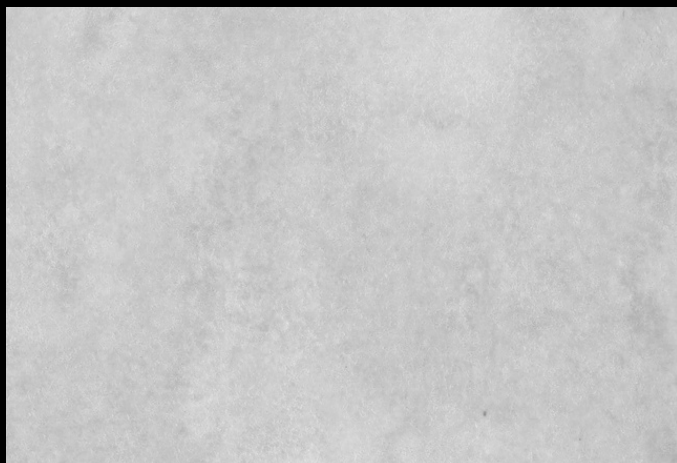


**Noble Oak**



**Desert Oak**

***Concrete Finish***



**Silver Stone**



**Rustic Concrete**

TECHNICAL DATA SHEET  
SOLID CORE FLOORING  
SIGNATURE COLLECTION

Appearance			
CONSTRUCTION	STONE POLYMER COMPOSITE		
USE	COMMERCIAL & RESIDENTIAL		
SIZE	4mm x 181mm x 1220mm / 5mm x 310mm x 620 mm		
WEAR LAYER	0.3mm/0.5mm		
FINISH	Polyurethane/UV Coating		
GAUGE	4.0mm/5.0mm		
PIECES/BOX	12 pcs/box		
COVERAGE/BOX	2.65/2.31 sq. m		
LIMITED WARRANTY	20 Year Residential		
Dimension Characteristics & Deviation Requirement			
DIMENSION DEVIATION	DEVIATION OF LENGTH	EN 649:2011	Deviation $\leq 0.13$ of nominal length up to 0.5mm
	DEVIATION OF THICKNESS	EN 649:2011 EN 428	Nominal value $\pm 0.13$ mm, -0.10mm; Average value $\pm 0.15$ mm
SQUARENESS	EN 649:2011 EN 427		$\leq 400$ mm, $\leq 0.15$ mm;
STRAIGHTNESS			$\leq 400$ mm, $\leq 0.20$ mm;
HEIGHT DIFFERENCE	GB/T 4085 & EN 649: 2011		has $\leq 0.10$ , hmax $\leq 0.15$ mm
GAPPING			Oa $\leq 0.10$ mm, Omax $\leq 0.15$ mm
Classification			
STATIC ELECTRICAL PROPENSITY	EN 1081		PASS
SLIP RESISTANCE WET	EN 433		PASS, 0.6mm
WEAR GROUP	NF 189	Group	T
TYPE BINDER CONTENT	EN ISO 10582	Type	I
DIMENSIONAL STABILITY (AVERAGE MEASURED VALUE)	EN 434		$\leq 6$
RESIDUAL IDENTATION	EN 433		$\leq 0.10$ mm
CASTOR CHAIR TEST	ISO 4918 (EN 425)		OK
FIRE RESISTANCE	EN 1350-1		Bf1-S1
HEAT STABILITY			0.33mm/0.01 (80°C + 2°C, 6hr/hr)
THERMAL CONDUCTIVITY	EN ISO 10456 (EN 12 524)	W/(m.K)	
FORMALDEHYDE EMISSION	EN717-1		CLASS EO: 0. mg/mg3
COLOR FASTNESS	ISO 105B02		$\geq 6$
FLEEXIBILITY	EN 435		NO CRACK WAS FOUND
CHEMICAL PRODUCTS RESISTANCE	EN 423		PASS



### Sustainability for Usage

- Residential: ECOFLOOR Click is suitable for use in interior residential areas, including kitchens, hallways, and living spaces, but not recommended in conservatories or unheated areas.
- Light Commercial: ECOFLOOR Click is suitable for use in most light commercial locations apart from those subjected to heavy rolling loads, high traffic or wide temperature fluctuations.
- Levels should not vary by more than 2-3 mm in a 2 meter area; if they do preparation works will be required.
- ECOFLOOR Click should be the last thing installed into the room and after all other works and installation of fitted units, avoiding risks of accidental damage.

### Expansion Gaps

- Residential: ECOFLOOR Click is extremely stable; however we do require expansion gaps at the perimeter of the room and around all fixed objects. For rooms up to 10 m length, this gap should be at least 2 mm and can be concealed with skirting or with a cover trim. For rooms 10-20 m length, this should be increased to 5 mm on all sides. Expansion gaps must be allowed at all doorways.
- Light Commercial: For all commercial areas we recommend expansion gaps of 5 mm are allowed at the perimeter of the rooms and around all fixed objects, and at all doorways. For areas longer than 20 mm, expansion gaps must also be allowed within the floor.